

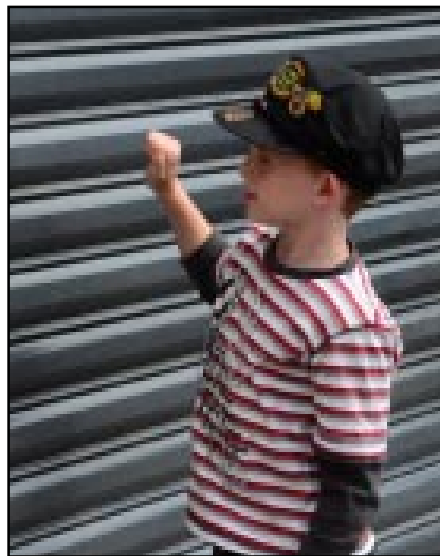
Grand opening for Tram Barn 3

Saturday 4 February marked another milestone for the Society with the official opening of the Society's third tram barn by the mayor of Christchurch, Mr Bob Parker—ably assisted by the Society's youngest benefactor Lachlan Jansen.

The ceremony was attended by over 100 members and friends of the Society and the official party comprised our president, Graeme Belworthy, Christchurch Central MP Nicky Wagner and her colleague Amy Adams, Dave Carr from the HTT, Mike Esposito and John Smith from the City Tramway, the mayor and mayoress, and Lachlan Jansen and his family.

After speeches from Graeme Belworthy, Nicky Wagner, Dave Carr and Mike Esposito, the mayor declared the building open. He then invited Lachlan, whom he'd designated "deputy mayor" for the occasion, to knock three times on the door of the barn and call out, "Open up, I'm the deputy mayor." The door then opened as if by magic and those in attendance were invited to inspect the barn. Following this the opportunity was taken for a tram ride in 178 which made a couple of trips to the township and back. A barbecue followed, run by the capable Phyllis to whom our thanks are due.

During the speeches, it was heartening to hear that it was planned to have the City Tramway operating again by Christmas. Bob Parker reiterated his commitment to light rail for Christchurch, making the point that he had grown up in the Heathcote Valley which was served by an electric rail service (he has privately confessed



Top: Mayor Bob Parker instructs Jason Jansen on the delicate art of door knocking.

Above: "Open up, I'm the deputy mayor." Young Lachlan gives three knocks after the mayor had officially declared TB3 open.

Photos: Roy Sinclair

to a fondness of the "Ec" locomotives). He said that people liked travelling by rail and that overseas experience showed that they would walk much greater distances to catch a tram or train than they would to catch a bus.

Coming events

The next Meeting will be a talk from English member Brian Edwards on **15 February** in the Lions building, Ferrymead at **7.45 pm.**

Phyllis will provide her usual delicious supper \$2.00 per person.

This promises to be a very interesting evening.

Next work party

The next work party is scheduled for **Saturday 18 February 2011**. Formal work parties are held every **third Saturday of the month** and Alan Roi provides a cooked midday meal. There are also activities **every Saturday** and on **Monday evenings**.

Editorial address: Joe Pickering, P. O. Box 17, Woodend, North Canterbury 7641. Phone 03 312 2578. Email jpickering@clear.net.nz.

To all members and friends



ANOTHER YEAR HAS begun and lets hope it's better than the last one.

The opening of Tram Barn 3 on Saturday was well attended so thank you to those who turned up and made it very successful. Thanks also to Joe Pickering for his effort as MC.

I would like to take this opportunity to personally say a big thank you to every one who contributed in any way to the project. The main part of the building is complete and the vehicles are undercover but we still need to keep the fundraising going to complete the fit out. The fit out includes such things as fire sprinklers and intruder alarm for safety, power for lighting etc, concrete floor which will allow for racking to maximize storage space. It is also intended to have traction power over the middle road.

Work on Invercargill Birney 15 is continuing very slowly and more funding is required to complete this project.

The trolley bus system is up and running again. The repaint of 210 is complete but more funding is required to purchase rubber for the windows and the sign writing on the bus. There is one small piece of overhead in the village that needs to be raised to allow 26 to operate again.

The numbers coming to the Park and other group booking are not the same as they were pre the quakes but are slowly increasing so hopefully this will be a better year.

Birthday and Wedding Tram booking are still generating income for the Society. Another fundraising idea that I understand was done in the past has been restarted, that of Twilight Tram Tours. It is early days yet and is in fact still a work in progress.

Work has started on restoration of the Square Shelter. Allen Harbrow has started some painting and also costing to enable us to apply for funding.

Brian Andrew aka Peanut is constructing a jigger shed behind Tram Barn 2. This will enable the jigger to be removed from tram barn 1 and more easily taken out and used to check and grease the track before the service car starts operation for the day.

A grant has just been received for the 24 project. Now that the urgency around the construction of Tram Barn 3 has passed more man power can be directed at this project.

There's always plenty of activity around the tram barn and all members and friends are always welcome. Come just for a visit or we could even find something for you to help with. Monthly work days are every third Saturday and a meal is provided.

I think that's enough from me for now.

Graeme Belworthy
President

The lead up to the big event...



On December 31 three trams were moved into the new shed. Top: 152 being winched in with Andy Rowe's truck crane. Middle Duckhouse trailer No 115 being propelled by a more rudimentary form of traction. Above: 178 making her first trip in 17 years over the Ferrymead tramway on her way to the new barn.

Photos: Dave Hinman

Canterbury Community Trust Grant

Treasurer STEPHEN TAYLOR reports that the Society was very pleased to receive notification from the Canterbury Community Trust that their trustees have approved a donation of \$8,000 towards "Materials and outwork for the ongoing restoration of the trucks and bodywork of Christchurch Hills Car No 24."

Work on restoration of Christchurch Hills Car No 24 had slowed to virtually nothing over the last year or so, firstly with the focus being on the Birney restoration, and more recently, focus on earthquake related matters and, in particular, the fundraising and then construction of Tram Barn 3. While both those projects still need work to be completed, it is hoped to re-kick off the restoration work on Hills car No. 24 in the near future.

Rotary Club of Christchurch Sunrise make donation

THE LATEST TB3 donation progress thermometer update is shown on the right.

With the receipt of a most welcome grant of \$7,500 from "Rotary Club of Christchurch Sunrise", the target for the construction of the TB3 building shell is virtually complete, but fit out of the building is still to be done including concrete floor, electrics, overhead (centre road only), sprinklers, security system, etc etc.

All drivers please note...

A trap for young players exists when trams are stopped and reversed on point work.

If a tram trails a set of spring-loaded points and then decides part-way through to reverse, the bit of the tram that has been through the points, rather than retrace its original path, is likely to go the other way if that is how the points are set. Meanwhile the part of the tram that has not gone through will go back the way it came. So you have half the tram trying to go one way and the other

half trying to go the other. Similarly, where there are several vehicles in the consist and some have gone through the points while others haven't, those that have will try to go the other way while those that haven't will retrace their original path.

Obviously this could result in a derailment and possible damage to track and/or vehicles.

Therefore when stopping and changing direction make sure that all vehicles are clear of point work



This isn't a tram but you get the idea. Things could have been a lot worse.

Internet photo

| | |
|--------------|------------------|
| \$100,158.41 | Pledged to Date |
| \$100,000.00 | Target |
| \$98,108.41 | Received to Date |

Tram Barn 3 Appeal - Fundraising Progress as at 22-Jan-12

Track work

KEN HENDERSON reports that track work has been concentrated in Tram Barn 3 over Dec/Jan and is a credit to all who have helped. Out on the main line weed control has been carried out as well as general maintenance such as checking bolts for tightness, cleaning grooves in the township and oiling points, etc.

The check rails have now been fitted on Munnings Bridge with help from Craig on the gas torch. The 5kph speed restriction is lifted. The main speed restrictions now are

a, **The signed 10kph restriction just past the Tamaki Station and**

b.. **Dead Slow over the point opposite the stables in the Township.**

More pictures from the Grand Opening



Top to bottom: THS president Graeme Belworthy, Dave Carr (HTT), Mike Esposito (CTL), Hon Nicky Wagner (MP Central Christchurch) address the gathering.

Photos: Helen Pickering



Top: John Smith (CTL) and Geraldine Bowman in a light moment watched by Pete Michie. Above: Dave Street, Ken Henderson, Peanut and Pete Michie.

Photos: Roy Sinclair

Vintage Dunedin line-up



Dunedin dwellers will be able to identify the location of this photo showing an impressive line-up of trams. In the foreground we have a Caversham ("Cavvy") car, built originally as a trailer to the plans of the Christchurch Standard trailers and later motorised. In front of that is a Bobtail car No 48 and in front of that a Sydney Bogie. Next is what appears to be a box car like our No 11 and then another Sydney Bogie. The photos comes from a collection of the late Russell Grigg senior.